

The Attitudes Towards Social Class Inequality Conflict in the Movie “Kabhi Khushi Kabhi Gham” by Karan Johar

Nofansyah

Universitas Balikpapan

nofansyah@uniba-bpn.ac.id

Waladdin Panggabean

Universitas Balikpapan

waladdin@uniba-bpn.ac.id

Abstract:

This research explores forms of attitudes and social class inequality conflict in the movie “Kabhi Khushi Kabhi Gham”. There are two objectives in this research; 1) To find and describe forms of attitudes in the movie Kabhi Khushi Kabhi Gham by Karan Johar. 2) To find and describe attitudes affect social class inequality conflict. The theory used in this research is Marxism using Karl Marx theory of conflict. The methodology employed is qualitative research in which the researcher tried to present the issues descriptively. As for the data, they were collected from the scenes and English dialogue script in the movie. The movie was taken out as the primary data. The method used by the writer in collecting data is library research. When data is collected and researched, data rewritten is grouped according to its types. Finally, the data was analyzed descriptively based on theory. After going through the analysis, the researcher finds the forms of attitudes and attitudes affect social inequality conflict were found in findings and discussion to the movie Kabhi Khushi Kabhi Gham. The forms of attitudes that found based in the movie are happen in society, and the attitude affect the social inequality conflict based in the movie that have been found are economy status, social and social class inequality conflict.

Keywords: Attitudes, Social Inequality, Conflict

INTRODUCTION

Literature is a written work to deliver a story. There are many kinds of literary work. Literary is not about knowledge only. Literary is an art, were many humanism factors in it especially feeling, passion, trust, belief as literary work element which is hard to make the limit. There are many literary works based on author's experiment, a sentimental event happened in the world and folk tales. Nowadays, literature works also can be enjoyed by all segment readers or viewers. There are many meanings can be excavated and explored. "Literature represents life in large measure, a social reality and the real world are also an object of imitation literature." (Wellek & Warren, 1997: 94)

"Kabhi Khushi Kabhi Gham" (in English: "Sometimes There's Happiness, Sometimes There's Sorrow") is a movie with a background of family conflict. This film is a 2001 Indian Family drama movie written and directed by Karan Johar and produced by Karan Johar. The film tells the story of an Indian family, which faces troubles and misunderstandings over their adopted son's marriage to a girl belonging to a lower economic group than them. The researcher analyze uses Marxism theory to connect the object.

Marxism theory is chosen to be used in this research because the theory is an interesting theory and suitable with this research, the researcher analyzes the plot of the story that shows about arranged married and the attitude of between two family as the cause of economy class that affect the attitudes, by using Karl Marx and Engels. Marxism is an economic and social system based upon the political and economic theories of Karl Marx and Friedrich Engels. While it would take veritably volumes to explain the full implications and ramifications of the Marxist social and economic ideology. Marx and Engels give importance to economic structure of the society and Marx explains; Man's social being determines his consciousness and the material interests of the dominant social class determine how all classes perceive their existence. All forms of culture, therefore, do not exist in an ideal, abstract form but are inseparable from the historical determining social conditions. (Marx, 1848: pp.55-56)

Of the classical founders of social science, conflict theory is most commonly associated with Karl Marx (1818–1883). Conflict is the study of complex issue and makes the story move. It is the study of how the Conflict impacts the story in literature works. The research relevant to this theory because this theory discusses about the conflict social economy class, and the theory of conflict connected because the conflict impacts the story in the film. Economy status takes effect because there is a type of economy status.

Economy status is typically broken into three levels (high, middle, and low) to describe the three places a family or an individual may fall into. When placing a family or individual into one of these categories. The researcher examines the economy status effect the attitude of the film in the research. By separate the economy social status high class and low class.

The research also discusses about the high class attitude towards culture or self-respect, and Dahrendorf explains about social inequality that appear in the society.

Concerned with how the movie affected the audience and whether economic and social system connected to this film. Its aim is to explain the literary work more fully and this means a sensitive attention to its story of the film, plot, conflicts, and meanings. And the researcher connects this research with the research object film “Kabhi Khushi Kabhi Gham” with Marxism to examine the social conflicts.

The researcher examines about the attitudes that affect the social inequality between high class and low class. There is a classification in a society that makes discrepancy between high class and low class. The attitude is towards wealth that affect their utility levels. Attitude comprises basically of mindset, viewpoint, beliefs, etc. these basic elements add to the person. The skill in faces the challenges of life and moving is often shaped by the attitude. That people evaluate utility gains and losses from their purchases not according to a change income absolute quantity, instead, relative to a reference point of price or consumption or income or wealth level. In according to the research kinds of attitudes shows in the movie, and the researcher choose this approach to support the theory that uses in this research. The researcher chooses to examine the object research, and it is Marxism theory.

Based on the fact that all the conflict, The researcher focuses on Karan Johar’s movie “Kabhi Khushi Kabhi Gham”, The researcher interest with this family drama film because this film Karan Johar made based on true story in his family, and also this is important to research because it is about how to love parents, respect them, and follow the culture that the parents teach when was in a childhood. The researcher focuses on the social family class attitude high and low class that brings about social inequality conflict.

LITERATURE REVIEW

MARXISM

Marxism is the study of complex issue and makes the story move. It is the study of how the Conflict impacts the story in literature works. There are two experts of conflict theory. For Karl Marx, and those closest to his way of thinking, all those modes of thought, including literary creativity, are ideological and are products of social and economic existence. Basically, Man’s social being determines his consciousness and the material interests of the dominant social class determine how all classes perceive their existence. All forms of culture, therefore, do not exist in an ideal, abstract form but are inseparable from the historical determining social conditions. (Carter, 2006. p.55-56)

Karl Marx Conflict theories are perspectives in sociology and social psychology that emphasize a materialist interpretation of history, dialectical method of analysis, a critical stance toward existing social arrangements, and political program of revolution or, at least, reform. Conflict theories draw attention to power differentials, such as class conflict, and generally contrast historically dominant ideologies. It is therefore a macro level analysis of

society. Based on a dialectical materialist account of history, Marxism posited that capitalism, like previous economy systems, would inevitably produce internal tensions leading to its own destruction.

Marx ushered in radical change, advocating proletarian revolution and freedom from the ruling classes. At the same time, Karl Marx was aware that most of the people living in capitalist societies did not see how the system shaped the entire operation of society. Just as modern individuals see private property (and the right to pass that property on to their children) as natural, many of the members in capitalistic societies see the rich as having earned their wealth through hard work and education, while seeing the poor as lacking in skill and initiative. “Marx believes that at his time or sometime in the near future, the proletariat could free itself from the bourgeoisie. The proletariat will overthrow the bourgeoisie and gain political control sooner or later (Marx, 1848: p.3).

Between the two classes, usually high class or the dominant class would have so many advantages rather than the low class. The researcher attempts to find the social class in the movie that shows different social class in economy that affect the social inequality.

SOCIAL INEQUALITY

Social inequality is a state in which occurs imbalance or social inequality that makes a difference a very striking between the community social inequality marked with the opportunity and benefits not the same for the position of different social in a status or community groups. Social inequality can be seen from not with her proportion of goods or services, benefits, property, opportunity, and punishment obtained between the community. Ralf Dahrendorf In 1959, Dahrendorf published in his most influential work on social inequality, titled *Class, and Class Conflict in Industrial Society*. Despite later revisions and affirmations of his work, today this book still remains as his first detailed and most influential account of the problem of social inequality in modern, or post-capitalist, societies. For Dahrendorf, conflict is “the inequality of power and authority which inevitably accompanies social organizations” (Dahrendorf, 1959 p.64).

In analyzes and evaluates the arguments of structural functionalism and Marxism, Dahrendorf believed that neither theory alone could account for all of society. Marxism did not account for evidence of obvious social integration and cohesion. Structural functionalism, on the other hand, did not focus enough on social conflict. He also asserted that Marx defined class in a too narrow, historically-specific context. During Marx's time, wealth was the determining factor in attaining power. The wealthy and therefore the powerful ruled, leaving no way for the poor to gain any power or increase their position in society.

In this research, the researcher just focuses communal on Marx’s conflict theory in social class of economy problems. Because, the researcher will find the conflict social class that affect family in the film “Kabhi Khushi Kabhi Gham”.

ATTITUDE IN THE SOCIAL CLASS

According to Winston Churchill, Attitude is a small thing that makes a big difference. One of the best things that bring a big change in a man or a woman's attitude is positive thinking. Attitude comprises basically of mindset, viewpoint, beliefs, etc. the types of attitude in social class, that is often stated are (Churchill, 2006: p.2);

Cognitive

The cognitive is basically based on the knowledge acquires and feel confident about the fact that we are educated on that subject and can present someone with the relevant information.

Behavioral

The Behavioral component takes care of the way reacts to certain things and is obviously one of the primary things that should take care off.

Emotional

The Emotional component basically deals with the giving out emotional stimuli, such as overreacting at simple things. We should stay calm under all circumstances to be ready to deal with whatever comes to our mind.

One who believes that high consumption is sinful will not enjoy a high level of consumption much. One who starts from a low or negative attitude toward material consumption, but yet has a high-income, may increase utility by shifting their attitude to be more favorable toward consumption. On the other hand, one who puts a lot of weight on material consumption, but does not have the income to consume at a level meeting their aspiration, may also suffer from frustration. They may increase their utility by adopting a less materialistic attitude. In rich attitude, there are two forms that positive and negative attitude. Whereas explicit attitudes predict deliberative and reflective actions, negative implicit attitudes predict bias towards individuals in situations in which people lack the desire or capacity to suppress their responses. (Horowitz, 2015: p.4). That means the attitudes from the rich is relevant to this research and how the attitude that shows from the rich to the low social class.

RESEARCH METHODOLOGY

The methodology employed is qualitative research in which the researcher tried to present the issues descriptively. As for the data, they were collected from the scenes and English dialogue script in the movie. The movie was taken out as the primary data. The method used by the writer in collecting data is library research. When data is collected and researched, data rewritten is grouped according to its types. Finally, the data was analyzed descriptively based on theory.

FINDINGS AND DISCUSSION

FORMS OF ATTITUDES IN THE SOCIAL CLASS

Attitudes is a predisposition or a tendency to respond positively or negatively towards a certain idea, object, person, or situation. Attitude influences an individual's choice of action, and responses to challenges, incentives, and rewards. Attitude is a small thing that makes a big difference. Social class status different in society is about the different class in wealthy, cultures, and also the attitude that can be affect the social inequality. According to Karl Marx, and those closest to his way of thinking, all those modes of thought, including literary creativity, are ideological and are products of social and economic existence. This social class status can be a reason to a conflict in society. Basically, Man's social being determines his consciousness and the material interests of the dominant social class determine how all classes perceive their existence. All forms of culture, therefore, do not exist in an ideal, abstract form but are inseparable from the historical determining social conditions.

There are something that can trigger someone's attitude. The movie shown most of the reason why Rahul does not show his attitudes as a rich and respectful man when he met Anjali and starts to love each other. Yash ever tells Rahul to follow the traditions of their family and never compromise with the self-respect of their family.

One of the best things that bring a big change in a man or a woman's attitude is positive thinking. Attitude comprises basically of mindset, viewpoint, beliefs, etc. the types of attitudes in psychology, that is often stated are cognitive, behavioral, and emosional. Social class status is the class of social in the society, the social class can be separate in 2 classes, high class and low class. The movie shows the difference social class status in two family. Raichands family, and Sharmas family. in the movie, Raichand is the rich family who has everything. Really different with Sharma, they only have a sweet shop and live in severity. The researcher find a scenes below are explanations about problems that found in "Kabhi Khushi Kabhi Gham" movie.

For Karl Marx, High class Between the two classes, usually high class or the dominant class would have so many advantages rather than the low class. The problem shown when Rahul come home with private helicopter from London after he finished the MBA college. This scene is shown Rahul using his father helicopter. That helicopter have an initial "YR" means Yash Raichand. He comes from London, and sees his mother again. He seems so happy to come home.

Picture 1: Screenplay 16:30-19:20



The culture in this film is about hereditary. Yash Raichand as a father, and as parents he wants to give their sons got a better facility to everywhere. For example, the transportation that they use is an expensive car, and private helicopter. The figure shows that the high class can buy everything, and can be whatever they want, but in conditions the educations must be the first to finish. Yash Raichand in this movie shows that he has a big house just like a castle. This is explain how successful Yash Raichand as a business tycoon.

Picture 2: Screenplay 19:25



The big house that he has, showed how rich is Raichands family, in their lives 2 grandmother of Rahul, Yash, Nandini, Daijaan, Rahul, and Rohan. That house also had a temple to pray. The big house is actually a background that they use to shooting a movie. This is how Yash be a successful business man in india, and also, he is the famous businessman in india. Whole India knows about him from a newspaper.

Picture 3: Screenplay 36:13



The expression of Rohan, he seemed afraid and this is the first time for Rohan went to the market in Chadni Chowk because he never used to go there. He became a spoiled boy and feel disgusted in that place, but he must wait in the car. In this scene, Rahul gets a news that Daijan is sick, he wanted to deliver a medicine for her. Rohan is the second brother of Rahul he is always shows how rich his family, and his attitudes shows high class attitude.

For Karl Marx low class is about occupying the lowest socioeconomic position in society. This movie shown the different of Sharma's family. in the scene, just shows that Anjali Sharma and her father is ordinary person. But, they are humble to Raichand's family. because, Daijan is a housemaid, she is also really care with Rohan, Daijan assume Rohan as her child, because she takes care of him from childhood.

Picture 4: Screenplay 26:25-26:42



Anjali works in Bauji Sharma sweet shop with her sisters, and the sweet shop name is Bharat Halwai Sweet Shop. The only business that Sharma's family have in Chadni Chowk the south side of Indian market. But this Sweet shop always have a customer, even from Raichand's family.

Rahul Raichand as the character in the movie start shown his social status when he came back from London. He is seemed so excited, he can gather with his family again. And after that, he continue to work in his father company. Yash raichand give a half of company to Rahul to run the company. Because Yash getting old, and trust Rahul to be a business man. But in other situation, Sharma's family only have a Sweet Shop. And Anjali continue that sweet shop with her sister Rukhsar and Pooja. They serve and works really hard. But they always find happiness even when they don't have a lot of money. Anjali have a hobby with baseball, and support india to win that game. So, that's why anjali always become a happy woman, silly and talk to much. Even that she is only an ordinary woman. But she always thank god about whats that she got. Rukhsar is the second sister of Anjali Sharma, she is also run the shop of his father, Bauji Sharma. She is already purposed by a man of letters, but in this movie don't show much of the man's background. But, his family already meets with Daijan to propose Rukhsar. The different social status between them is high class and low class, That affect to different attitude between Raichand's family and Sharma's family. it shows, how rahul sees Anjali for the first time in Chadni Chowk. And also, how Yash Raichand gives Rahul some advice. The culture in Raichand's family must be hereditary from Yash father, and then from Yash to Rahul. And here is the forms of attitudes from different scenes. The researcher find some forms of attitudes, and explains below.

Cognitive

Cognitive is basically based on the knowledge acquire and feel confident about the fact that is educated on that subject and can present someone with the relevant information. First problem shows in the movie is Rahul must keep the traditions and the respect of his family, because he is the first son of Yash. He is adopted by yash because Nandini cannot get pregnant, so, they decide to bring Rahul for the first time in their family. When Rahul grows up, he become a business tycoon after he finish his college in London. Yash wants him to continue his business, and trust him to be like him just like his grandfather. Their traditions are get an education in the elementary school which is the school for high class, and then continue in dormitory school until 10 years, after graduate, their sons must get into the college, in London. They keep that tradition hereditary. This condition indicates the forms of attitudes affects the social inequality conflict by the education, traditions,

behavioral, and emotional based on the theory of conflict and the social inequality of Marxism.

Picture 5: Screenplay 24:49-25:00



The expression of Yash in this scene is proud, his eyes staring Rahul very sparkly and his lips is smiling indicated he was reinforcing his words to Rahul with proud. Yash Raichand shows Rahul, how success if he followed the tradition in the family with respect. The utterance above in excerpt, Yash expressions which can be classified as a wise man, because the meaning of his words he means the attitude to be a wise man is about shows respectful to another. Their traditions is all about respect or it means forever. The precise choice in life determines the fate.

Picture 6: Screenplay 33:15-33:21



The problem about marriage is appear when Rahul's grandmother tells about how Yash and Nandini meets and get married. After Rahul's grandmother said about Arranged married between Nandini and Yash Raichand because of they are keep the tradition. The utterance above in excerpt, Nandini said that her sons if want to get married, he can choose who will be his wife. And the tradition is change, because Rahul must be having criteria of woman that he can chooses to marry with him. Rahul just cannot speak about that and keep silent.

Behavioral

Behavioral is a component of attitude that shows how reacts to certain things and is obviously one of the primary things that should takes care of. This problem shows in the scene about Rahul reaction when for the first time he met a beautiful and funny girl. Her name is Anjali Sharma, this is beginning when Rahul deliver the medicine for Daijan, because Daijan being sick. And also, Rahul go to Chadni Chowk to deliver that. But, after

get there. Rohan is left in car and he seems doesn't happy because he assume that the Chadni Chowk is the hot place and uncomfortable with that situation. Then, Rohan want to get to Rahul to. But it's too late. This is also the first time Rohan meet Pooja. Rohan being bullied by pooja and her friends in Chadni Chowk market. The researcher find there is the part of scenes of that situation in the next excerpt.

Picture 7: Screenplay 35:33-36:21



Anjali Sharma looks so happy and celebrating the Indian team baseball she is dance with the music. In this scene, Rahul just surprised he saw a beautiful, sweet smile and kinda funny act woman. He just falls in love with her on the first sight. Rahul falls in love from the first sight, this is how happy Rahul sees Anjali dancing in the crowd and can't hold it for a while. Until Rahul trying to follow the dance but he cannot because he wears a suit. He is smiling when sees Anjali, because she is the ordinary funny women he never met before. This is why Rahul cannot fall in love with Naina. Even Anjali from the low-class family background.

Emotional

The Emotional component basically deals with the giving out emotional stimuli, such as overreacting at simple things, should stay calm under all circumstances to be ready to deal with whatever comes to mind. Based on the movie, reactions of each character in the part of scenes, shows an attitude by emotional conditions, and how to resist emotions refers to incidents or conflict happens in this movie. The researcher found The reaction of high class to low class.

Picture 8: Screenplay 1:13:52-1:14:04

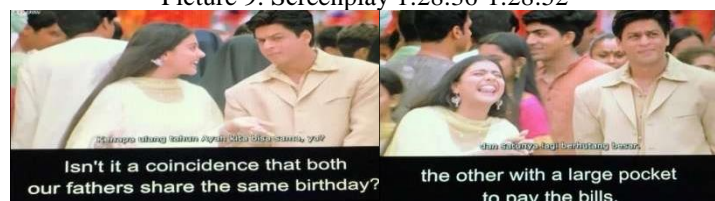


Yash refused to come to Rukhsars wedding, because he is stubborn and maintain his honor, he does not want to come to the lower-class party. he asks Rahul to attend the wedding rather than come with his wife, just because Daijaan is a baby sitter of Rohan, take care of Rohan from the elementary school until he grows up. The utterance above in excerpt, Yash language shows how rude and looks do not want to deal things that are not so important to him.

ATTITUDES AFFECTS SOCIAL INEQUALITY CONFLICT

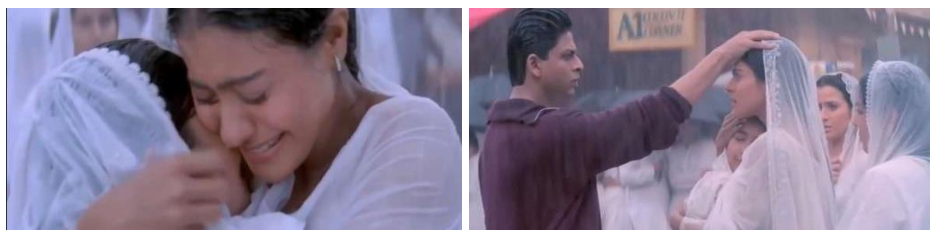
Social inequality is a state in which occurs imbalance or social inequality that makes a difference a very striking between the community social inequality marked with the opportunity and benefits not the same for the position of different social in a status or community groups. Social inequality can be seen from not with her proportion of goods or services, benefits, property, opportunity and punishment obtained between the community. Dahrendorf published in his most influential work on social inequality, titled *Class and Class Conflict in Industrial Society*. In analyzes and evaluates the arguments of structural functionalism and Marxism, Dahrendorf believed that neither theory alone could account for all of society. Marxism did not account for evidence of obvious social integration and cohesion. Structural functionalism, on the other hand, did not focus enough on social conflict. The researcher find in the movie shows the affect of attitudes with different social class status between Rahul and Anjali. Yash as the high-class business man does not want his son married with ordinary girl from south of India Chadni Chowk. Anjali as the low-class status actually resist to fall in love with Rahul, because Rahul is from high class and respectful man. Anjali feels, she is not worth it to be a part of family in raichands family, but in the end, there is a conflict between Rahul with his father just because he falls in love with ordinary girl. Yash really wants to arranged Rahul with Naina, because Yash knows Naina is the daughters of his partner of his business. Below the excerpt shows the conflict of social inequality about arrange marriage for the traditions in *Kabhi Khushi Kabhi Gham* movie.

Picture 9: Screenplay 1:28:36-1:28:52



Anjali seemed tell jokes about her family, especially her father. She means her father had a lot of bills to pay, because she was just had a sweetshop as a business. Bauji Sharma let anjali run the shop, because she is the eldest child. Anjali got help from her sister Rukhsar to run that Sweet Shop. Rahul became fall in love with her from the first time he met Anjali. The meaning in their conversation is all about search the topic of talks each other because that is the first time for Rahul hang out with Anjali, another women that he try to get her heart and her feelings. It is all about shows how Rahul likes anjali very much since they meet with wrong idea of Anjali. For the first time Anjali thinks Rahul is the fiancé of Rukhsar, Ashfaque. She is wrong after she reads the newspaper that there is a picture about Raichands Family, and she sees Rahul, she feels everything will be ruin, but Rahul just falls in love with her because she is a funny woman.

Picture 10: Screenplay 1:28:36-1:28:52



The words of Yash haunted in Rahul's mind, Rahul can not accept that, because he was fall in love with Anjali already. Rahul never saw her background, her family, and he never saw Anjali made a mistake to his family. Especially, Daijan take care of Rohan. Daijan is a part of Raichand family. The utterance above Yash speech about social class inequality, because Yash just want Rahul to get married with Naina, his friends daughter. Naina also knows all about Rahul and Yash. That is the reason why Yash wants Naina to be Rahul's wife and be the part of Raichand's family.

Picture 11: Screenplay 1:29:25



The situation of Rahul was he could not be able to choose, family or love. Then, he chooses love, because Rahul felt right to do something whatever make him happy, because Rahul had kept the tradition of his family, and he made a mistake, he fall in love with an ordinary woman, because he never fall in love just because of beauty and money. Here is the social inequality conflict, and the ego from Yash. He is really disappointed with Rahul and tell Rahul is never be his son, and Rahul is never be a part of Raichand's family. the reason just a simple mistake, Rahul falls in love, makes him be a stranger in his own house.

Picture 12: Screenplay 3:09:45



Anjali persuades Rahul to went back to his family, because Anjali does not happy without a blessing from Yash. That is not their country. Those are not their people. They have set up

a house in London, but Rahul Had ever wondered what kind of a home is that. Anjali really wants to get blessed from Yash because he is her father-in-law. She does not want lived that way. She wants to ask forgiveness to Rahul's family. Krish have the right to had a grandmother and grandfather.

The utterance above is about Anjali is really sad lives without a blessing from father in law, and that is not a kind of family that she wants. the different social class around them, different social class status, just because Yash is from the respectable family. it does not to have a big ego to separate his son to his mother. All their imagine is about how to have a big happy family, because in this world, the family traditions, whatever it is. When a son makes a mistake, that shall not be go away without a forgiveness. However, that will be, Parents always worry about their sons, daughter, because parents caring for their children until be an adult and from all the things that parents want is just that their children are happy and successful and even success in having their own family, parents always pray for the best for their children. All of these things have no other purpose than to sees their children grows up and become respectable people in the society.

Conclusion is the last part of the research. It summing up all the process of the research and explain the result. The research presents two kinds of conclusion that are theoretical conclusion and empirical experience. The content of this conclusion is summary of all things related to attitudes in social class and the attitudes affect social inequality conflict.

CONCLUSION

From the previous chapter, the researcher observes about a form of attitudes that affects social class inequality conflict in Kabhi Khushi Kabhi Gham movie. The attitudes impact to the different social class. Attitudes from high class to low class, and otherwise. That has affected the social inequality without consider the purpose of the action. Marxism said the reaction happen between high class and low class, For Karl Marx, and those closest to his way of thinking, all those modes of thought, including literary creativity, are ideological and are products of social and economic existence. Basically Man's social being determines his consciousness and the material interests of the dominant social class determine how all classes perceive their existence. There are 3 forms attitudes causing the social inequality conflict, cognitive, behavioral, and emotional. On the other hand, one who puts a lot of weight on material consumption, but does not have the income to consume at a level meeting their aspiration, may also suffer from frustration. They may increase their utility by adopting a less materialistic attitude. The impact is not only harmful to himself but also harmful to the people around him. The researcher can analyze the social class status using Marxism theory, and use the attitudes to implemented in the movie. The researcher got the new experience by analyzing the attitudes affect the social conflict in Kabhi Khushi Kabhi Gham. The researcher observed about both of family with different social class, high class and low class.

References

- Bogdan, Robert C. D. Steven J.T., (1992), *Introduction to Qualitative Research Methods: A Phenomenological Approach in the social Sciences*, Alih Bahasa Arief Furchan, John Wiley dan Sons, Surabaya, Usaha Nasional.
- Carter, David. (2006). *Literary Theory*, Harpenden, Herts, London.
- Churchill, (2006). *Types Of Attitudes*. Great Britain.
- C.S. Lewis. (1963) *The Worlds Last Nights*. Belfast, Ireland.
- Dahrendorf, R. (1959). *Class and Class Conflict in Industrial Society*, (London: Routledge; First Pub. 1957).
- Denzin, N. K. (1978). *The Research Act A Theoretical Introduction to Sociological Methods*. USA :McGraw-Hill, Inc.
- Fakultas Sastra. (2018) *Pedoman Penulisan Skripsi*. Balikpapan :Universitas Balikpapan.
- Golden John. (2001). *"Introducing Cinematic and Theatrical Elements in Film"*. Portland, Oregon.
- Hess, Markson & Stein(1990), *sociology is the systematic study of human behavior*.
- Horowitz, R.Suzane (2015), *"The Rich, Love them or hate them; implicit and explicit attitudes toward the wealthy"*. Article Group Process & Intergroup Relations.
- Klarer Mario. (2004) *"An Introduction to Literary Studies"* 29 West 35th Street, New York, NY 10001.(P;1 & 56)
- Kwang-Yew, Jianguo Wang (1999).*Journal of Economic Behavior & Organization* vol. 45 2001 279–291.
- Marx, K. (1848) *Karl Marx & Friedrich Engels The Communist Manifesto 1848*.New York: Pathfinder Press.
- _____,K. (1964). *Selected Writings in Sociology and Social Philosophy*(translated by T.B. Bottomore). London: McGraw-Hill.
- _____, K. (1970). *The Communist Manifesto of Karl Marx and Friedrich Engels*. New York: Pathfinder Press.
- Pope Catherine. (1995). *Rigour and qualitative research*, London: University of Leicester
- Rabiger, M. (2009), *Directing The Documentary*,Second Edition. London. Reed Publishing
- Sapitri Eka J. (2010). *"Social Class In The Princess Casamassima Novel by Henry James"* (Skripsi Sastra Inggris S1, 2010). Indonesia University of Computer. English Department, Faculty of Letters. Bandung, Indonesia.
- Selden, R., Widdowson, P. and Brooker, P (2005)., *A Reader's Guide to Contemporary Literary Theory*, London and New York, etc., Pearson Longman, (first published 1985).
- Utomo Yusuf C. U. (2013). *"Marxist Analysis of French Revolution in Charles Dickens' A Tale of Two Cities"* Skripsi Sarjana. Universitas Diponegoro, Indonesia.
- Wahyuningsih Isnia. (2015). *"Analysis of the Sociology of Literature Alan Swingewood in the film The Book Thief"* Skripsi Sarjana, Universitas Islam Negeri Sunan Kalijaga, Yogyakarta.
- Wellek and Warren. (1997). *Theory of literature*. New York: Harcourt, Brace.